

# ORNEX LE GUIDE

2019 Edition



[WWW.ORNEX.FR](http://WWW.ORNEX.FR)





# SOMMAIRE

«Ornex Le Guide» is a 25 pages booklet gathering all the information you might need if you live or stay in Ornex.

In addition, this booklet includes additional leaflets providing you with more practical information on specific subjects you might be interested in. Regularly updated, they are available on demand at the front desk.

These leaflets are also available online on the town's website: [www.ornex.fr](http://www.ornex.fr)

## Table of Contents

### BOOKLET

#### 3. The Townhall

- Municipal Services
- Municipal Police
- Service « Enfance »  
(School and Children related)
- Social Service

#### 8. Living in Ornex

- Administrative formalities
- Mobility
- Culture/Sports/Leisure
- Local life

#### 21. Living environment

- Urban planning
- Environment
- Books Box

#### 25. Institutional partners

### LEAFLETS

A word from the Mayor

Town council

Service «Enfance»

The action of the social service

Associations based in Ornex

The rental of municipal halls

Annual events in the town

The kitchen gardens

Emergency numbers

# THE TOWN HALL

Located near Geneva, Ornex and its hamlets (Maconnex and Villard-Tacon) enjoy a preserved environment, characterized by an outstanding view on the highest Jura mountain chain, Lake Geneva and the Alps.

Its architectural and cultural heritage, its green space and and its communal life make Ornex a good and pleasant place to live. Ornex is now home to 4'500 inhabitants and keeps welcoming newcomers.

Urban planning of the area is planned on a short, medium and long term basis to provide the needed modern infrastructures, whilst keeping and promoting the local identity.

The town has two schools, a multi-function venue, and a plurivalent hall. Playgrounds allow families and young people to enjoy the preserved surroundings.

The City Stadium and its football field, located behind the municipal technical centre, the BMX terrain and its street workout equipment, located rue de la Place d'Armes, is at the disposal of / available to teenagers.

Tennis players can enjoy the outdoor tennis court, also located rue de la Place d'Armes, sheltered from traffic and noise.

Paths in the woods and around the 'Tattes' allow walkers and cyclists to wander around in safely and peacefully.

## TOWN HALL OF ORNEX

45, rue de Béjoud - 01210 ORNEX

04 50 40 59 40 / [accueil@ornex.fr](mailto:accueil@ornex.fr) / [www.ornex.fr](http://www.ornex.fr)

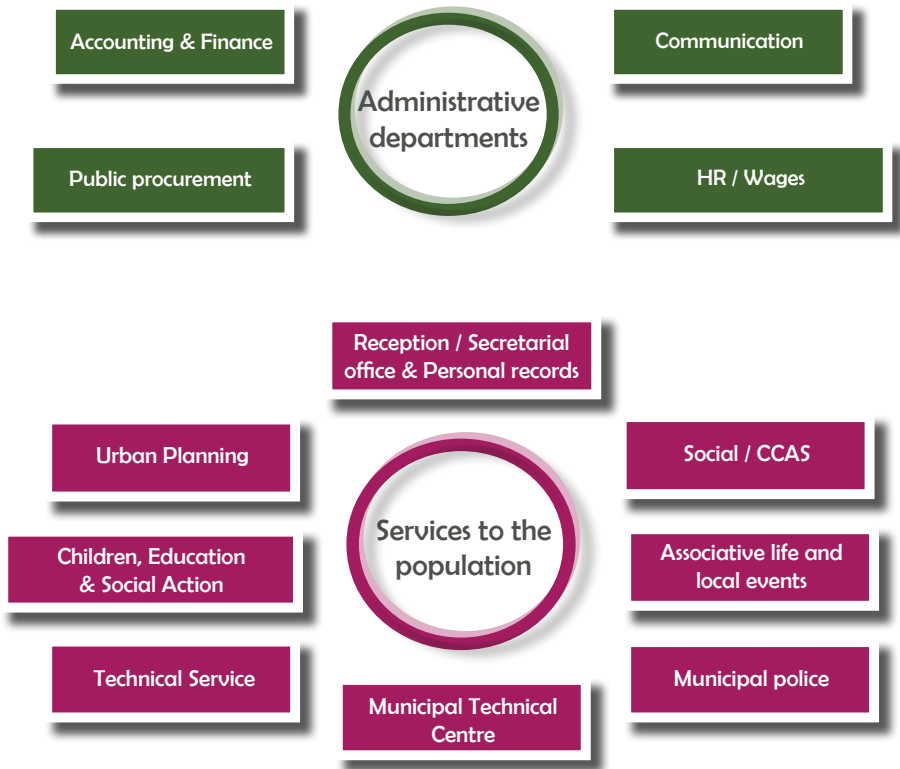
## OPENING HOURS

Monday - Wednesday - Thursday - Friday : 8.30am to 12.00pm and  
2pm to 6pm

Tuesday: 2pm to 6pm



# MUNICIPAL SERVICES



Reception / Secretarial office & Personal records  
[accueil@ornex.fr](mailto:accueil@ornex.fr)

Social / CCAS  
[social@ornex.fr](mailto:social@ornex.fr)

Communication / Associative life and local events  
[communication@ornex.fr](mailto:communication@ornex.fr)

Children & Education  
[enfance.scolaire@ornex.fr](mailto:enfance.scolaire@ornex.fr)

Urban Planning  
[urbanisme@ornex.fr](mailto:urbanisme@ornex.fr)

# MUNICIPAL POLICE

**Municipal Police ensure good order, safety, security and public hygiene. They work closely with the Gendarmerie, the Customs officials and the Swiss Police department to strengthen their field presence and lead joint action.**

Placed under the authority of the Mayor, the Public Prosecutor and the Prefect, municipal police officers are, as is required by law, sworn in for their department's jurisdiction by the Public Prosecutor.

**Municipal police officers are concerned with ensuring the peacefulness within the town.** They provide a local service to help reduce delinquency, neighbourhood conflicts and illegal or obstructive parking.

## Civilian participation

**In 2018, the municipal police put in place a civilian participation plan, in conjunction with the gendarmerie.**

Within a neighbourhood, **civilians watch out for each other** : home monitoring, mail collecting, suspicious activities or suspicious door-to-door salesperson reporting, etc.

Since implementation, results have been quite encouraging and point to a decrease in thefts or robbery.

**It is possible to make appointments from Monday to Friday from 8.00am to 12.pm and from 2.00pm to 5.00pm**

**04 50 40 59 40 / [police.municipale@ornex.fr](mailto:police.municipale@ornex.fr)**

# SERVICE « ENFANCE »

The town has two schools, « école des Bois » and « école de Villard ». The assignment to one of the schools depends on the location of the parents' place of residence.

School takes place on a 4 days/week schedule from 8.30am to 11.30am and from 1.30pm to 4.30pm. There is no school on Wednesday.

The municipality also proposes additional services:

- **Before and After-school care services on school days**
  - Lunch and activities during the lunch break
  - School bus services for « école des Bois »
- **Recreation Centre on Wednesdays during the school year**
- **Activity based Recreation Centre during the holidays**
  - Autumn holidays
  - Winter holidays
  - Spring holidays
  - Part of the summer holidays



For further information about those services, please contact the Service 'Enfance' at the Town Hall:

[enfance.scolaire@ornex.fr](mailto:enfance.scolaire@ornex.fr)  
04 50 40 59 40



# SOCIAL SERVICES

The Mayor is president of the Community Social Action Association (CCAS: Centre Communal d'Action Sociale). This local institution develops social-oriented missions.

The association also guides people in need of support towards temporary accommodation solutions, helps with filling the application for social housing, transfers files to the Point Accueil Solidarité in Ferney-Voltaire for further help, and can give aid for financial relief.

**The association ensures adequate emergency food aid, develops solidarity, transport and facilitates the organisation socio-cultural activities.**

## Social aids / Benefits

The government has set up a web-based survey which can be used to assess whether someone is entitled to up to 34 social benefits. To access the survey and file formalities to obtain those social benefits/aids: [mes-aides.gouv.fr](http://mes-aides.gouv.fr)

## Social housing

Applicants looking for a social accommodation in the area may submit a **single file for several cities**, in recording offices or directly online: [www.demande-logement-social.gouv.fr](http://www.demande-logement-social.gouv.fr)

Social service in Ornex records filled-out applications for social housing. **Their renewal is not automatic and they should be updated every year.**

A commission is organised by the providers of social housing to allocate available accommodations.

The complete list of all the social housing providers can be found on the additional leaflet: « Housing ».

For further information it is possible to make appointments  
by phone or e-mail:

04 50 40 59 40 / [social@ornex.fr](mailto:social@ornex.fr) / [www.ornex.fr](http://www.ornex.fr)

## ADMINISTRATIVE PROCEDURES

### Civic life

#### Elections

Since the single electoral register reform in January 2019, registration on the electoral rolls is now possible up to 6 weeks before the polls. Registration can be made at the town hall or online:

[www.service-public.fr/particuliers/vosdroits/R16396](http://www.service-public.fr/particuliers/vosdroits/R16396)

Required documents:

- ID or Passport
- Proof of address (less than 3 months old)
- Registration form available at the town hall or online

#### Census

Any French national (regardless of gender) must take part in the census **within the 3 months after his or her 16th birthday**. To do so, you are required to go to the town hall with the following:

Required documents:

- ID or Passport
- Family record book
- Proof of address (less than 3 months old)

**A certificate of registration to the Census is required to take official exams, and to obtain a driving license.** The delivered attestation must be carefully kept as town halls do not deliver duplicates.

## Administrative procedures

### Proof of accommodation (Attestation d'accueil)

This document is required for foreigners needing a Visa when they accommodate foreign nationals **for a period of not more than three months.**

**Applications need to be submitted within the six months prior to the arrival of the foreign nationals who stay with them.** The forms to fill are available directly at the town hall and the dematerialized revenue stamp can be bought online: <https://timbres.impots.gouv.fr/>

### Duplicate of the family record book

In case the family record book is lost, stolen or damaged, **the rightsholders may request a duplicate (free of charge).**

In the event of the death of a rightsholder, his or her children cannot request a duplicate.

With judge's agreement, the guardian of a minor child may eventually get a duplicate.

**The family record book must be requested directly at the town hall of the place of residence.**

Required documents:

- **Proof of the applicant's identity who must be one of the rightsholders.**
- **Information to provide in order to fill the family record book (names, surnames, dates and places of birth of the family members)**



## Authentication of a signature

The effect of the legalization is to certify the authenticity of the signature under privy seal by an official countersignature (official signature).

**Applicants must come in person to the town hall.**

Required documents:

- **The document to legalize with no signature (the signature must be done in the presence of the delegated agent)**
- **A signed and valid ID Card or Passport**

The delivery is immediate.

## Office of Civil Registration (“Service d’état-civil”)

In France, in case of birth, marriage and/or death, the event should be recorded at the town hall’s Office of Civil Registration.

A civil status certificate (“acte d’état-civil”) is produced at the town hall where the event took place or where the affected person lives.

### Birth

The “Déclaration de Naissance” or birth registration is mandatory for any child born on French Territory. It should be made **within five working days of the birth, not including the date of the birth itself.**

Registration must be made at the local town hall of the place of birth, by someone who attended the birth, usually the father.

<https://www.service-public.fr/particuliers/vosdroits/F961>

## Acknowledgement of paternity (“reconnaissance de paternité”)

The acknowledgement of paternity is a voluntary process to establish filiation. The parental authority result is a set of rights and obligations in the child’s interest.

**This is only necessary for unmarried couples.**

**The acknowledgement can be done during the pregnancy or after birth at the town hall.**

**<https://www.service-public.fr/particuliers/vosdroits/F887>**

## Republican Baptism (“Baptême républicain”)

The republican baptism ceremony is possible if one of the parents is living in Ornex. The application file can be obtained at the town hall.

**The file completed should be submitted at least 1 month prior to the celebration.**

**<https://www.service-public.fr/particuliers/vosdroits/F1507>**

## Weddings

The Mayor officiates weddings if one of the future spouses is a resident of Ornex, holds a residence for at least one month prior to the file submission or if one of the future spouses’ parents is living in Ornex.

**The file submission can only be done at the town hall.**

**<https://www.service-public.fr/particuliers/vosdroits/F930>**

## Civil solidarity pact (“PACS”)

Since November 2017, the Civil Solidarity Pacts are celebrated at the town hall of the place of the partners’ residence.

For more information:

**<https://www.service-public.fr/particuliers/vosdroits/F1618>**

## Death

Within 24 hours after a passing, an official declaration of death needs to be made at the local town hall.

<https://www.service-public.fr/particuliers/vosdroits/F909>

If the deceased lived in Ornex but passed away in another town, the family can also inform the town hall to record the event in the civil registers as “une transcription de décès”.

## Cemetery

A burial plot or colombarium niche can be assigned directly at the town hall upon simple request and payment of the fee.

## Fees for temporary occupation of public domain

For any request to occupy public domain, for professionals, associations or individuals, a form needs to be filled at the town hall or on the town’s website.

**The Town planning service is in charge of delivering permits for the temporary occupation of public domain.**

Service Public ([www.service-public.fr](http://www.service-public.fr)) is a governmental portal giving access to information, procedures and forms regarding administrative formalities, also accessible through [www.ornex.fr](http://www.ornex.fr).



# MOBILITY

## Bus from Ornex

Several bus lines operate throughout the whole town:

- **La ligne 64** : Ferney-Mairie – Meyrin-Gravière
- **La ligne 66** : Thoiry-Centre commercial – Aéroport
- **La ligne 68** : Thoiry-Centre commercial – CERN
- **La ligne F** : Gex-L'Aiglette – Gare Cornavin train station

**Find more information about the routes on the TPG's website: [www.tpg.ch](http://www.tpg.ch)**

- **Ligne 33** : Divonne-les-Bains – Bellegarde-sur-Valsérine  
**[www.ligne33.fr](http://www.ligne33.fr) (Regional bus)**

**The high level of service buses (BHNS: Bus à Haut Niveau de Service) between Gex and Ferney-Voltaire, will help improving the traffic flow. Road-works are currently underway and should be completed by October 2020. Ornex will benefit from two BHNS bus stops (Maconnex and Centre-bourg) with a bus every 12 minutes at peak time.**

**This line will also connect the Pays de Gex to Switzerland with a bus every 6 minutes at peak times from Ferney-Voltaire.**

Find more information about the BHNS: [www.ain.fr](http://www.ain.fr)

## Night Bus

The Noctambus is a night-bus network managed by the Public Transport of Geneva connecting the city to the surrounding towns and villages on Friday and Saturday nights.

The Line NE Genève Bel-Air > Gex Poste stops at Ornex at Prénépla, Ornex-Fruitière and Maconnex's bus stops.

**Schedules and routes can be found on [www.noctambus.ch](http://www.noctambus.ch)**

## Bus travel to skiing spots

**Ski-bus shuttles give access to Monts-Jura ski stations from Pays de Gex (from Gex and Saint-Genis-Pouilly).**

Three departures and three returns are planned on Saturday and Sunday from January to March and during the school holidays of the area (Zone A).

**For more information: [www.monts-jura.com](http://www.monts-jura.com)**

## TER SNCF

The TER SNCF connects by bus Bellegarde to Ferney Voltaire (Ferney-Mairie's bus stop). **Schedules and routes can be found on:**  
[www.ter.sncf.com/auvergne-rhone-alpes](http://www.ter.sncf.com/auvergne-rhone-alpes)

## Cycle Path

The association APICy (Association des Piétons et Cyclistes du Pays de Gex) collects information about the cycle paths network in Ornex and the surrounding towns.

They offer an interactive map updated regularly on: [www.apicy.fr](http://www.apicy.fr)

The Pays de Gex Agglo and the town support environmentally friendly modes of transport. The 'vélo-route', a cycling path connecting Gex and Ferney-Voltaire will be operational early 2020.

All communal buildings in Ornex have hoops to park bikes.

## Electrical cars

In spring 2020, an electrical charging point will be available on the town hall parking lot; **allowing the simultaneous charging of two cars and two electric bikes.**

## Car-sharing

The conurbation authority of the Pays de Gex deployed a **car-sharing service in Gex, allowing the rent of a self-service car on an occasional basis, by the hour, the day or more.**

This local, useful and economical service can be a substitute to the use of a private car or a company car.

**Find the renting stations, terms and conditions and fares on :**  
[www.paysdegexagglo.fr](http://www.paysdegexagglo.fr) / Vos démarches / Transport

# CULTURE / SPORTS / LEISURE ACTIVITIES

From the Col de la Faucille to Fort l'Écluse, with the aquatic activities on the Geneva lake and the cultural center in Ferney-Voltaire, Pays de Gex abounds with proposals for all.

## **Tourist office of Pays de Gex**

The tourist office website displays all the cultural, sporting and leisure activities available in Pays de Gex.

6 agencies welcome tourists and users in Ferney-Voltaire, St-Genis-Pouilly, Lélex, Gex, Mijoux and on top of the Col de la Faucille.

**04 50 28 09 16 / [www.paysdegex-tourisme.com](http://www.paysdegex-tourisme.com)**

## **Agence de Ferney-Voltaire**

**30, grand'rue 01210 Ferney-Voltaire**

From 01/07 to 31/08

Monday to Friday : 10.00am to 12.30pm and 2.30pm to 6.00pm

Saturday : 10.00am to 12.30pm and 2.30pm to 5.30pm

Sunday : 9.00am to 1.00pm

From 01/09 to 30/06

Tuesday to Friday : 10.00am to 12.30pm and 2.30pm to 6.00pm

Saturday : 9.00am to 1.00pm.

Closed Monday, Sunday and during national holidays.

## **Hiking**

Pays de Gex offers great trails with varying levels of difficulty. In Ornex, the trails lead to beautiful viewing points on the Mont-Blanc.

**For more information about the Nature Reserve, visit:**

**[www.rnn-hautechainedujura.fr](http://www.rnn-hautechainedujura.fr)**

**You can find more about the trails here: [www.paysdegex-tourisme.com](http://www.paysdegex-tourisme.com)**

## **The Town strives to deliver easy access to leisure activities for all ornesians**

### **The swimming Pool in Ferney-Voltaire**

Ornesians have access to a preferential rate at the swimming pool in Ferney Voltaire, simply by presenting a proof of residence such as an electricity, gas or telephone bill.

### **Opening times and fares:**

[www.ferney-voltaire.fr/culture-loisirs/sport/centre-nautique](http://www.ferney-voltaire.fr/culture-loisirs/sport/centre-nautique)

### **The Music, Dance and Dramatic Art Academy (“Conservatoire”)**

In a continuing effort to provide access to culture for all, a financial aid can be allocated to ornesian students enrolled at the Conservatoire by simple request presented to the Community Social Action Association (CCAS: Centre Communal d’Action Sociale).

Contact : 04 50 40 59 40 - [social@ornex.fr](mailto:social@ornex.fr)

### **More information and registration:**

[www.ferney-voltaire.fr/culture-loisirs/culture-animations/conservatoire](http://www.ferney-voltaire.fr/culture-loisirs/culture-animations/conservatoire)

## **And maintains dedicated outdoor recreation spaces**

### **City Stadium**

*Behind l’école des Bois; 252, rue de Bėjoud*

**Soccer goals, table tennis set, and a basketball court as well as tables and benches are available.**

### **BMX terrain and Street workout**

*Rue de la Place d’Armes and Chemin des Tattes*

It is possible to exercise while enjoying the natural environment through a course for mountain bike, regular bike, and BMX, as well as a street workout module with a double drawbar and a wall bar set on cushioned flooring.

A soccer pitch with goals and basketball hoops are also available.

## Playgrounds

**6 accessible playgrounds** are available in the town to all children under adult supervision:

- In front of l'Ecole des Bois (252 rue de Bėjoud)
- In the Bois d'Ornex (789, avenue de Vessy)
- Near the Tennis court (rue de la Place d'Armes)
- Near the BMX terrain (rue de la Place d'Armes and chemin des Tattes)
- Rue du Père Adam
- In the Jardin des Hirondelles (rue de la Tour)



Find more information about **local associations, offering numerous activities in Ornex**, in the outdoors or the communal halls on the leaflet: “Associations based in Ornex”.

Similarly, the town organizes a dozen of events with free and open access for ornesians.

More information is available on the dedicated leaflet: “Annual events in the town”.

# COMMUNAL LIFE

## Waste

Pays de Gex Agglo helps local inhabitants with their waste management through a complete website detailing all the services available: collection, recycling center, waste sorting (knowing the color code and sorting for peculiar waste) « [www.mon servicedechets.com](http://www.mon servicedechets.com) ».

The waste / recycling center badge can be obtained by contacting directly the Pays de Gex 04 50 99 12 01 – [info@paysdegexagglo.fr](mailto:info@paysdegexagglo.fr)  
[www.paysdegexagglo.fr](http://www.paysdegexagglo.fr)

**Fly tipping is strictly forbidden.** It is disrespectful to both residents and community agents.

**Green waste, rubble and bulky waste must be brought to the recycling centre.**

### Green waste

Gardening and mowing waste as well as dead leaves and organic waste (peeling, rotten fruits and vegetable, cooking oil) can be composted.

**Contact the Pays de Gex Agglo to get a composter.**

**In case of a high volume of waste, you can bring it to the recycling centre.**

Prefectural decree n ° SAF 2017-02, July, 3rd 2017, strictly forbids the burning of green waste all year round.

### Sharp waste

Needles, syringes, diabetic injector pens or any other sharp waste need to be disposed of in specific trashcans. Some pharmacies organize the collection of such waste.

**The DASTRI (national organism collecting and treating all sharp waste with a risk of infection) can provide with more information.**



## Trees and shrubs regulation

The article 671 of the Civil Code establishes the following rules:

It is permitted to have trees and shrubs close to the neighboring property only if it is planted at least at:

- 2 meters from the limit between 2 properties, for plants above 2 meters of height,
- and 50 cm for plants under 2 meters of height.

## Clearing is an obligation

Strictly defined by law, clearing applies to urbanized and farming areas as well as to woods and spaces surrounding these areas.

**Owners must maintain their lands.**

## Snow clearance

Contrary to the widely-held view, gritting and sidewalk clearing in front of one self's home is the sole responsibility of the owners.

**In case of an accident or incident, owners will be held accountable.**

Municipal services take in charge gritting and sidewalk cleaning of all the communal roads and public spaces.



## Noise pollution

- The use of noisy gardening and DIY devices likely to be a nuisance to the surrounding neighborhood such as lawnmower, lawn-tractor, chainsaw, watering pump, etc. is forbidden outside of authorized hours defined by a prefectural decree:

Les jours ouvrables de 8h30 à 12h et de 14h à 19h30

Les samedis de 9h à 12h et de 15h à 19h

Les dimanches et jours fériés de 10h à 12h

- The use of noisy household appliances likely to be a nuisance to the surrounding neighborhood such as stereo system, tv, computer, washing machine, dryer, dishwasher, vacuum cleaner, etc. is also forbidden.

In Article R623-2 of the Penal Code, noises or offensive / night disturbances troubling the peace of others is punishable by a 3rd class fine.

In addition to this fine, the source of the nuisance can be confiscated.



## URBANISME

All the forms regarding town planning and construction work are available at the town hall and directly online on the town's website: [www.ornex.fr](http://www.ornex.fr).

### **Town planning service at the town hall. (ADS : Autorisation du Droit des Sols)**

The town mutualizes all the authorization requests for constructions to the Pays de Gex ADS service.

The examining officer manages all requests regarding town planning in Ornex's area.

Ornex's town planning service is open to the public every two weeks, on Wednesdays from 8.30 to 11.30 am. (No appointments needed).

### **Intercommunal Local Town Planning and Accommodation Plan (PLUIh: Plan Local d'Urbanisme Intercommunal et de l'habitat)**

In order to carry out building or expansion projects, it is possible to check the zoning and regulation in place.

**The Géoportail's website** indicates the location (address, town) or the parcels identification number.

It is possible to zoom in and out as well as to check all the current documentation and regulation in effect in Ornex.

Information regarding the Intercommunal Local Town Planning and Accommodation Plan can also be found on this website.

**[www.geoportail-urbanisme.gouv.fr](http://www.geoportail-urbanisme.gouv.fr)**

*The accuracy of all the online geographical information is certified, only up to date and complete documents are released.*

# ENVIRONNEMENT

## Environnemental Charter

In 2018, the town released a communal Charter for environment. The document encourages concrete and realistic actions to preserve our living environment.

The Charter is divided into a range of themes such as **promotion of energy efficiency, fight against climate change, protection of biodiversity, conjunction of environment and health, diversification of the mobility offer, public awareness through communication.**

Action brochures prepared by and for all the municipal services help to implement concrete and sustainable goals in line with the Charter.

The following are a few examples of the actions in place to this day:

- The lamp post's most inefficient and energy-consuming lamp is being traded with LED lamp.
- Within the ecological corridor, in front of the motel, along « la voie des Tattes », the Pré Rugue environmental project (temporary pond, conservatory orchard, wooded countryside) helps support the preservation of dozens of fauna and flora species in the area.
- Communal buildings welcoming the public are maintained with ecological and/or eco-labeled products (cleaning products, solvent-free paints).
- The paper used for the municipal newsletter and the leaflets during communal events is recycled.
- Cycle paths' layout (rue de Moëns, rue de Bėjoud, rue de Brétigny, avenue de Vessy) supports environmentally friendly mobility.

## Invasive species

### Ambrosia

Ambrosia with mugwort's leaf is an invasive plant originating from North America. Its presence is attested in France since 1863, and more locally since 1908 in the Département de l'Ain in Pont-d'Ain.

Since then, ambrosia colonized all the plains of the department. **The fight against ambrosia concerns everyone.**

The prefectural decree from April, the 10th 2009, requires every land's occupants (tenants, beneficiaries, and any other kind of occupants) or by default the landlords, **to fight against ambrosia's growth and to destroy it wherever it grows.**

Contact : Agence régionale de santé (ARS) Rhône-Alpes, Délégation de l'AIN  
Service Environnement Santé

9 rue de la Grenouillère 01012 Bourg-en-Bresse Cédex

04.81.92.01.00 / [ars-dt01-environnement-sante@ars.sante.fr](mailto:ars-dt01-environnement-sante@ars.sante.fr)

For more information: [www.pollens.fr](http://www.pollens.fr) / [www.ambroisie.info](http://www.ambroisie.info) /  
[www.atmo-auvergnerhonealpes.fr](http://www.atmo-auvergnerhonealpes.fr)

### Fight against the processionary caterpillar

Processionary caterpillars' nests can be found on pines, cedars, and cypresses. They represent a health risk for both humans and pets.

**Allergens are present in their hair and provoke itching, eye condition or more serious problems such as edema and respiratory accident.**

Renseignements sur le site [www.chenilles-processionnaires.fr](http://www.chenilles-processionnaires.fr)

The invasive exotic plant species identification's guide in the Pays de Gex is available on: [www.paysdegexagglo.fr](http://www.paysdegexagglo.fr) / Rubrique Environnement / Gestion des milieux naturels

# BOOKS BOX

## Shelves-service books

Because in Ornex, we believe a book's place is not collecting dust, on a shelf, if you are passionate about literature and always on the lookout for a new adventure, if you have the desire to share your favorite reading, if you simply love to read, the town installed boxes allowing the drop off and/or pick up any books at any time.

The boxes were decorated by the pupils of the local schools during recreational times.





# INSTITUTIONAL PARTNERS

## **PAYS DE GEX AGGLO**

Layout, housing, mobility, town planning, social and health, waste management, heritage, support to businesses.

**135, rue de Genève 01170 GEX**

**04 50 42 65 00 / [infopaysdegexagglo.fr](mailto:infopaysdegexagglo.fr) / [www.paysdegexagglo.fr](http://www.paysdegexagglo.fr)**

## **PAYS DE GEX'S TOURIST OFFICE**

Culture, Leisure, and Tourism.

**Agence de Ferney-Voltaire - 30 grand'rue 01210 Ferney-Voltaire**

**04 50 28 09 16 / [www.paysdegex-tourisme.com](http://www.paysdegex-tourisme.com)**

## **SIVOM DE L'EST GESSIEN**

Syndicat Intercommunal à Vocation Multiple = Intercommunal Association of Multiple Vocations.

Home meal deliveries, school canteen, sports associations, sport structures, and public buildings management.

**27, chemin de la Planche brûlée 01210 Ferney-Voltaire**

**04 50 40 18 67 / [sivomeg@sivom-eg.fr](mailto:sivomeg@sivom-eg.fr)**

## **SIDEFAGE**

Joint association for waste management (sorting, composting...).

**5, Chemin du Tapey Z.I. d'Arlod 01200 Bellegarde-sur-Valserine**

**04 50 20 25 97 / [www.sidefage.fr](http://www.sidefage.fr)**

## **SIEA**

Joint association for energy and e-communication in the Ain department

**32, cours de Verdun 01000 Bourg-en-Bresse**

**04 74 45 09 07 / [www.siea.fr](http://www.siea.fr)**

## **Gessian water authority**

Access to drinkable water and wastewater treatment.

**Technoparc - 200, rue Édouard Branly 01630 Saint-Genis-Pouilly**

**04 85 29 20 00 / [www.regieeauxgessiennes.fr](http://www.regieeauxgessiennes.fr)**



[WWW.ORNEX.FR](http://WWW.ORNEX.FR)

